

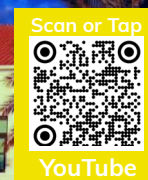


<https://sigonellamhs.dodea.edu/>

Sigonella MHS
Official Business, Department of Navy
PSC 824 Box 08
FPO, AE 09623-0001

DSN: 306-0303
Commercial: +39 044-4106-0303

Office Hours:
Monday - Friday: 0700-1600



THE JAGUAR JOURNAL

Dates: 24 MAY 24 – 05 JUN 24

Upcoming Dates



From the Principal's Desk Ms. Alexia Kunkle

- 28 MAY Senior Dinner
- 29 MAY Senior Graduation @ 1800
- 30 MAY Spring Sports Awards
- 31 MAY STUCO Elections
- 31 MAY MS Fun Around the World Fest.
- 05 JUN Return Chromebooks
- 05 JUN Last Day of School @ 1100 Dis.

As we close out the school year, I want to end with the same excitement and gratitude with which we began. A heartfelt THANK YOU for all you do to support your children and our school. It is truly an honor to work with our wonderful students, dedicated parents, incredible staff, and vibrant military community. I am endlessly proud of our students' accomplishments this year.

Our students have blossomed and grown in countless ways. Our sixth graders bravely navigated the BIG school, handled class changes with multiple teachers, and embraced their new identity as Jaguars. Seventh and Eighth graders stepped up as leaders in the middle school. Ninth graders quickly understood the importance of freshman year grades and enjoyed the new privilege of having lunch off campus. Sophomores and Juniors thoughtfully managed their schedules, and took advantage of all SigMHS has to offer, while our Seniors prepared to embark on their exciting life journeys. We wish the Class of 2024 all the very best and know they will always remember, "once a Jaguar, always a Jaguar."

In addition to bidding a fond farewell to the Class of 2024, we will also say goodbye to our beloved Mr. Brown, who has graced SMHS with his passion and wisdom for 25 years. One of his students beautifully summed it up this year: "I like Mr. Brown because he brings the real world to the classroom through his teaching." We are sending Mr. Brown out into the "real" world to pursue his many other passions. He will be dearly missed. Congratulations, Mr. Brown!

Lastly, a few important reminders as we wrap up the year: From May 30th through the end of the year, all eighth graders have the option to eat lunch at the Food Court. This is optional; they may still choose to eat in the cafeteria. It's our way of welcoming them to their 9th grade year! June 5th is the last day of the school year with an 11:00 AM dismissal. We will collect Chromebooks with chargers and sleeves, if issued, on the last day of school. Next year's calendar is attached to this email. Please check out the changes!

While I hope everyone enjoys a magical summer filled with relaxation and joy, I am already looking forward to the incredible adventures that next year will bring. Go JAGS!



Did you know: You can be a volunteer at SigMHS. We value the varied experience and desire to serve that volunteers bring to our school community. Whether your passion is sports or academics, helping with special events, or you are open to any opportunity, we can find a perfect fit for you. All you need to do is pick up a volunteer packet at our office, complete it, and we'll do the rest. Packets can take a bit of time to process, so don't delay. Pick up a packet today to be ready for next year.



THE SPOTLIGHT

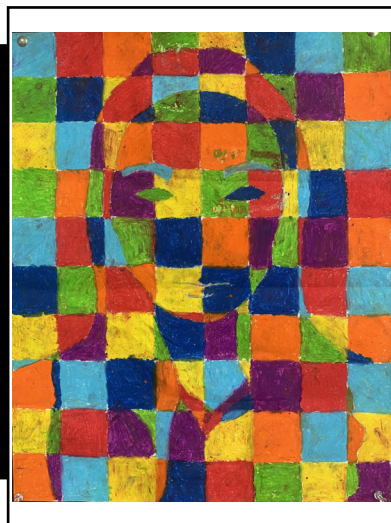
Congratulations Class of 2024



From left to right back row: Isaac A., Theodore N., Jaydon R., Tyler L., Rhys M., Antonio S., Deshawn W., Aaron W., David F., John B. and David K. From left to right middle row: Evie D., Vie Charlotte H., Vivian R., Jaelynne R., Bradley T-C., Kacper G., Delaney R., Juliane S., Anabel V., and Michelle M-L. From left to right front row: Gianna B., Gabriella C., Isla R., Saskia M., Jessica G., Isabel M-L., Chloe D., Aelan W., and Isabelle B.

**STUDENT
VISUAL
DESIGNS**

Teacher: matt.mckown@dodea.edu



Gianna B. 12th Grade



Darrence C. 6th Grade



ADS & STUFF



You are cordially invited to...
 SIGONELLA MIDDLE HIGH SCHOOL
Senior Graduation




Master of Ceremonies
 Mr. Matt McKown
 Visual Art Instructor
 Sigonella MHS

Guest Speaker
 Mr. Curtis Brown
 Mathematics Instructor
 Sigonella MHS

WEDNESDAY, 29 MAY 2024
 1800
 SIGONELLA MHS
 JAGUAR ATHLETICS GYMNASIUM

Semester 2, SY 2023/2024 (Spring)
Final Exam Schedule

Friday May 31st B-Day

Period 5	7:45 to 9:15	Exam Period
Period 6	9:20 to 10:45	Normal Class
Lunch	10:45 to 11:30	Lunch
Period 7	11:35 to 1:00	Exam Period
Period 8	1:05 to 2:30	Seminar (Awards/STUCO Elections)

Monday June 3rd A-Day

Period 1	7:45 to 9:15	Exam Period
Period 2	9:20 to 10:45	Normal Class
Lunch	10:45 to 11:30	Lunch
Period 3	11:35 to 1:00	Exam Period
Period 4	1:05 to 2:30	Normal Class

Tuesday June 4th B-Day

Period 5	7:45 to 9:15	Normal Class
Period 6	9:20 to 10:45	Exam Period
Lunch	10:45 to 11:30	Lunch
Period 7	11:35 to 1:00	Normal Class
Period 2	1:05 to 2:30	Exam Period

Wednesday June 5th A-Day

Period 4	7:45 to 9:15	Exam Period
Period 8	9:20 to 11:00	Make Up Exam Clean Locks Turn in Check Out Sheet

BACK TO SCHOOL PHYSICALS RODEO

20 May 2024 23 May 2024
 04 Jun 2024 13 Jun 2024

MEDICAL HOME PORT
 0745-1600
 BY APPOINTMENT ONLY

CALL TO SCHEDULE YOUR APPOINTMENT
 095-56-2273 OR
 DSN 624-2273

Physicals will be 15 min appointments, no acute care or medical refills will be available at these appointments.

BRING ALL COMPLETED PHYSICAL FORMS & ANY OUTSIDE IMMUNIZATION RECORDS






BREAKFAST & LUNCH

May 2024

MAKE A COMPLETE MEAL:
Entrees: Choose One
*Fruit: Choose One OR Two
*Milk: Choose One
Must Choose a Fruit OR Vegetable

NOTE: Students are permitted one complete meal. Second meals are available at full price. Students who do not select at least 3 items with one being a fruit will be charged full price.

**MAY 2024
SIGONELLA BREAKFAST**

2023-2024 Meal Prices
Breakfast: \$2.00 (\$0.30 reduced)

MONDAY 6	TUESDAY 7	WEDNESDAY 1	THURSDAY 2	FRIDAY 3
(1) Maple French Toast Squares OR (2) Assorted Cereal Assorted Fresh Fruits Choice of Milk	(1) Breakfast Sandwich OR (2) Assorted Cereal Assorted Fresh Fruits Choice of Milk	(1) Whole Grain Bagel w/ Cream Cheese OR (2) Assorted Cereal Assorted Fresh Fruits Choice of Milk	(1) Biscuits w/ Jelly OR (2) Assorted Cereal Assorted Fresh Fruits Choice of Milk	(1) Breakfast Burrito (Egg & Cheese) OR (2) Assorted Cereal Assorted Fresh Fruits Choice of Milk
MONDAY 13	TUESDAY 14	WEDNESDAY 8	THURSDAY 9	FRIDAY 10
(1) Maple French Toast Squares OR (2) Assorted Cereal Assorted Fresh Fruits Choice of Milk	(1) Breakfast Sandwich OR (2) Assorted Cereal Assorted Fresh Fruits Choice of Milk	(1) Whole Grain Bagel w/ Cream Cheese OR (2) Assorted Cereal Assorted Fresh Fruits Choice of Milk	(1) Biscuits w/ Jelly OR (2) Assorted Cereal Assorted Fresh Fruits Choice of Milk	(1) Breakfast Burrito (Egg & Cheese) OR (2) Assorted Cereal Assorted Fresh Fruits Choice of Milk
MONDAY 20	TUESDAY 21	WEDNESDAY 15	THURSDAY 16	FRIDAY 17
(1) Maple French Toast Squares OR (2) Assorted Cereal Assorted Fresh Fruits Choice of Milk	(1) Breakfast Sandwich OR (2) Assorted Cereal Assorted Fresh Fruits Choice of Milk	(1) Whole Grain Bagel w/ Cream Cheese OR (2) Assorted Cereal Assorted Fresh Fruits Choice of Milk	(1) Biscuits w/ Jelly OR (2) Assorted Cereal Assorted Fresh Fruits Choice of Milk	(1) Breakfast Burrito (Egg & Cheese) OR (2) Assorted Cereal Assorted Fresh Fruits Choice of Milk
MONDAY 27	TUESDAY 28	WEDNESDAY 22	THURSDAY 23	FRIDAY 24
(1) Maple French Toast Squares OR (2) Assorted Cereal Assorted Fresh Fruits Choice of Milk	(1) Breakfast Sandwich OR (2) Assorted Cereal Assorted Fresh Fruits Choice of Milk	(1) Whole Grain Bagel w/ Cream Cheese OR (2) Assorted Cereal Assorted Fresh Fruits Choice of Milk	(1) Biscuits w/ Jelly OR (2) Assorted Cereal Assorted Fresh Fruits Choice of Milk	(1) Breakfast Burrito (Egg & Cheese) OR (2) Assorted Cereal Assorted Fresh Fruits Choice of Milk
MONDAY 27	TUESDAY 28	WEDNESDAY 29	THURSDAY 30	FRIDAY 31
	(1) Breakfast Sandwich OR (2) Assorted Cereal Assorted Fresh Fruits Choice of Milk	(1) Whole Grain Bagel w/ Cream Cheese OR (2) Assorted Cereal Assorted Fresh Fruits Choice of Milk	(1) Biscuits w/ Jelly OR (2) Assorted Cereal Assorted Fresh Fruits Choice of Milk	(1) Breakfast Burrito (Egg & Cheese) OR (2) Assorted Cereal Assorted Fresh Fruits Choice of Milk

Menu subject to change based on availability

MAKE A COMPLETE MEAL:
Entrees: Choose One
*Fruit: Choose One OR Two
*Vegetables: Choose One OR Two
*Milk: Choose One
Must Choose a Fruit OR Vegetable

NOTE: Students are permitted one complete meal. Second meals are available at full price. Students who do not select at least 3 items with one being a fruit or vegetable will be charged full price.

**MAY 2024
SIGONELLA MIDDLE/HIGH LUNCH**

2023-2024 Meal Prices
Grades K-5: \$3.50
Grades 6-12: \$3.75
Reduced (all grades): \$0.40
Sure Start: Free

MONDAY 6	TUESDAY 7	WEDNESDAY 1	THURSDAY 2	FRIDAY 3
(1) Chicken Tenders w/ Breadstick OR (2) Lasagna w/ Breadstick Variety of Fruits Seasoned Roasted Broccoli Honey Glazed Carrots Choice of Milk	 Italian Day Homemade recipes developed by our Italian chefs!	(1) Tacos w/ Spanish Rice OR (2) Cheese Quesadilla w/ Spanish Rice Variety of Fruits Pinto Beans Taco Trimmings Choice of Milk	(1) BBQ Chicken w/ Corn Muffin OR (2) Sloppy Joe Variety of Fruits Seasoned Green Beans Sliced Cucumbers w/ Ranch Choice of Milk	(1) Pizza OR (2) Hamburger or Cheeseburger Variety of Fruits Romaine Side Salad Crinkle Cut Fries Choice of Milk
MONDAY 13	TUESDAY 14	WEDNESDAY 8	THURSDAY 9	FRIDAY 10
(1) Teriyaki Chicken w/ Rice & Breadstick OR (2) Spaghetti w/ Meat Sauce & Breadstick Variety of Fruits Seasoned Roasted Broccoli Honey Glazed Carrots Choice of Milk	(1) Chicken + Waffles OR (2) Fruit & Yogurt Parfait Variety of Fruits Oven Baked Tater Tots Baby Carrots w/ Ranch Choice of Milk	(1) Chicken Burrito Rice Bowl OR (2) Nachos Supreme Variety of Fruits Pinto Beans Taco Trimmings Choice of Milk	(1) Hotdog OR (2) Grilled Cheese Variety of Fruits Seasoned Green Beans Sliced Cucumbers w/ Ranch Choice of Milk	(1) Macaroni + Cheese OR (2) Italian Meatball Sub Variety of Fruits Romaine Side Salad Crinkle Cut Fries Choice of Milk
MONDAY 20	TUESDAY 21	WEDNESDAY 15	THURSDAY 16	FRIDAY 17
(1) Chicken Tenders w/ Breadstick OR (2) Lasagna w/ Breadstick Variety of Fruits Seasoned Roasted Broccoli Honey Glazed Carrots Choice of Milk	(1) Breakfast for Lunch OR (2) Ham and Cheese Croissant Variety of Fruits Oven Baked Tater Tots Baby Carrots w/ Ranch Choice of Milk	Early Release	(1) BBQ Chicken w/ Corn Muffin OR (2) Sloppy Joe Variety of Fruits Seasoned Green Beans Sliced Cucumbers w/ Ranch Choice of Milk	(1) Pizza OR (2) Hamburger or Cheeseburger Variety of Fruits Romaine Side Salad Crinkle Cut Fries Choice of Milk
MONDAY 27	TUESDAY 28	WEDNESDAY 22	THURSDAY 23	FRIDAY 24
	(1) Chicken + Waffles OR (2) Fruit & Yogurt Parfait Variety of Fruits Oven Baked Tater Tots Baby Carrots w/ Ranch Choice of Milk	(1) Chicken Burrito Rice Bowl OR (2) Nachos Supreme Variety of Fruits Pinto Beans Taco Trimmings Choice of Milk		(1) Macaroni + Cheese OR (2) Italian Meatball Sub Variety of Fruits Romaine Side Salad Crinkle Cut Fries Choice of Milk
MONDAY 27	TUESDAY 28	WEDNESDAY 29	THURSDAY 30	FRIDAY 31
	(1) Chicken + Waffles OR (2) Fruit & Yogurt Parfait Variety of Fruits Oven Baked Tater Tots Baby Carrots w/ Ranch Choice of Milk	(1) Tacos w/ Spanish Rice OR (2) Cheese Quesadilla w/ Spanish Rice Variety of Fruits Pinto Beans Taco Trimmings Choice of Milk	(1) Pasta w/ Zucchini & Cheese OR (2) Bundles of Turkey Variety of Fruits Neapolitan-Style Corn Mixed Vegetables Bagna w/ Strawberries and Cream Choice of Milk	(1) Pizza OR (2) Hamburger or Cheeseburger Variety of Fruits Romaine Side Salad Crinkle Cut Fries Choice of Milk

Menu subject to change based on availability

<https://www.mynavyexchange.com/studentmealprogram/>

BREAKFAST: FULL PRICE \$2.00 REDUCED: \$0.30
LUNCH: FULL PRICE: \$3.75 REDUCED: \$0.40



BREAKFAST & LUNCH

June 2024



MAKE A COMPLETE MEAL:
 Entrees: Choose One
 *Fruit: Choose One OR Two
 *Milk: Choose One
 Must Choose a Fruit OR Vegetable

NOTE: Students are permitted one complete meal. Second meals are available at full price. Students who do not select at least 3 items with one being a fruit will be charged full price.

JUNE 2024 SIGONELLA BREAKFAST

2023-2024 Meal Prices
 Breakfast: \$2.00 (\$0.30 reduced)

MONDAY 3

- (1) Maple French Toast Squares OR
- (2) Assorted Cereal
- Assorted Fresh Fruits
- Choice of Milk

TUESDAY 4

- (1) Breakfast Sandwich OR
- (2) Assorted Cereal
- Assorted Fresh Fruits
- Choice of Milk

WEDNESDAY 5

- (1) Whole Grain Bagel w/ Cream Cheese OR
- (2) Assorted Cereal
- Assorted Fresh Fruits
- Choice of Milk

THURSDAY 6



FRIDAY 7



MONDAY 10



TUESDAY 11



WEDNESDAY 12



THURSDAY 13



FRIDAY 14



MONDAY 17



TUESDAY 18



WEDNESDAY 19



THURSDAY 20



FRIDAY 21



MONDAY 24



TUESDAY 25



WEDNESDAY 26



THURSDAY 27



FRIDAY 28



Menu subject to change based on availability



JUNE 2024 SIGONELLA MIDDLE/HIGH SCHOOL LUNCH

2023-2024 Meal Prices
 Grades K-5: \$3.50
 Grades 6-12: \$3.75
 Reduced (all grades): \$0.40
 Sure Start Free

MAKE A COMPLETE MEAL:
 Entrees: Choose One
 *Fruit: Choose One OR Two
 *Vegetables: Choose One OR Two
 Milk: Choose One
 Must Choose a Fruit OR Vegetable

NOTE: Students are permitted one complete meal. Second meals are available at full price. Students who do not select at least 3 items with one being a fruit or vegetable will be charged full price.

MONDAY 3

- (1) Chicken Tenders w/ Breadstick OR
- (2) Lasagna w/ Breadstick
- Variety of Fruits
- Seasoned Roasted Broccoli
- Honey Glazed Carrots
- Choice of Milk

TUESDAY 4

- (1) Breakfast for Lunch OR
- (2) Ham & Cheese Croissant
- Variety of Fruits
- Oven Baked Tater Tots
- Baby Carrots w/ Ranch
- Choice of Milk

WEDNESDAY 5

Last Day of School :)
 Early Dismissal-No Lunch Served

THURSDAY 6



FRIDAY 7



MONDAY 10



TUESDAY 11



WEDNESDAY 12



THURSDAY 13



FRIDAY 14



MONDAY 17



TUESDAY 18



WEDNESDAY 19



THURSDAY 20



FRIDAY 21



MONDAY 24



TUESDAY 25



WEDNESDAY 26



THURSDAY 27



FRIDAY 28



Menu subject to change based on availability

<https://www.mynavyexchange.com/studentmealprogram/>

BREAKFAST: FULL PRICE \$2.00 REDUCED: \$0.30
LUNCH: FULL PRICE: \$3.75 REDUCED: \$0.40



STAFF, SOCIAL & TESTING

CONTACTS

ACT Testing: luis.caballero@dodea.edu
Administrative Officer (AO): michael.ricciardi@dodea.edu
All Officers' Spouses' Club (AOSC): aoscsigonella@gmail.com
ASPEN Accounts & Help: irma.l.hernandez@dodea.edu
ASVAB Testing: timothy.curling@dodea.edu
Athletic Director: michelle.chandler@dodea.edu
Attendance: sigonellamhsattendancestaff@dodea.edu
Child Development Center (CDC): (+39) 095 56 3736
Educational Technologist: antone.leustek@dodea.edu
Front Office (Middle High School): (+39) 044 4106 0303
Guidance Counselor (Middle School): luis.caballero@dodea.edu
Guidance Counselor (High School): sophia.erez@dodea.edu
Information Specialist: stephanie.pike@dodea.edu
Letterman Jacket Orders: michelle.chandler@dodea.edu
Nurse: michelle.chandler@dodea.edu
Principal, Ms. Alexia Kunkle: alexia.kunkle@dodea.edu
Principal, Assistant: TBD
PSAT Testing: stephanie.pike@dodea.edu
Psychologist (ES & MHS): ash.puttaswamy@dodea.edu
PTSO Board & President: sigonellaptso@gmail.com
Registrar: sigonellamhs.registrar@dodea.edu
SAT Testing: stephanie.pike@dodea.edu
School Age Care (SAC): (+39) 095 56 3712
School News Liaison (Social Media): antone.leustek@dodea.edu
Sigonella Elementary Main Office: (+39) 044 4716 838
Transportation: sandra.darrigo.ln@dodea
Yearbook: stormy.lucas@dodea.edu

SOCIAL MEDIA

FACEBOOK: <https://www.facebook.com/SigonellaMHS>
INSTAGRAM: <https://www.instagram.com/dodea.sigonellamhs.official/>
YOUTUBE: <https://www.youtube.com/@sig-tvsigonellamshs>



DoDEA/SMHS Testing

Scan or Tap



Information

AAPPL (Foreign Language): MAY/JUN 2024

ACT (School Code #867630): 2 DEC 2023

AP Exams: 6-17 MAY 2024

ASVAB:
 7 NOV 2023
 11 MAR 2024
 15 MAY 2024

Beginning-of-Year (ELA): Various Dates

CCRS Summative: 22 -30 APR 2024

Middle-of-Year (ELA): Various Dates

NAEP (8th Grade): 29 FEB 2024

PSAT/NMSQT: 11 OCT 2023

SAT (11th & 12th Grade): 2 APR 2024

SAT (School Code #577100):
 2 DEC 2023
 9 MAR 2024
 4 MAY 2024

Accelerated Withdrawal

SEMESTER 1: 29 NOV 2023
SEMESTER 2: 8 MAY 2024

For students who PCS prior to the end of an academic semester, SMHS/DoDEA heavily suggests at LEAST ONE MONTH notice of expected early withdrawal. For more information, or to start the withdrawal process, please contact sigonellamhs.registrar@dodea.edu



REGIONAL ACTIVITIES

HIGH SCHOOL

NOV 13-18 Creative Connections GRADE 9-12 • shawn.mccarthy@dodea.edu

Creative Connections is a six-day visual and performing arts symposium for talented high school students selected by application and audition. Instructors include experienced DoDEA teachers and contracted art and music specialists. Classes vary from year to year but often include drama, show choir, strings, dance, costuming, video production, drawing, mixed media, and watercolor. The week of intensive instruction challenges students to explore new creative avenues and refine their skills to the highest levels. The activity culminates with an exhibition of artwork followed by an evening performance. LIVE Stream: <https://youtube.com/@dodeaeuropecreativeconnections>

DEC 3-8 STEMposium • GRADE 9-11 • christine.arnold@dodea.edu

STEMposium is a weeklong experience in problem-solving and engineering and is designed to introduce selected DoDEA Europe students to a real-world engineering scenario that requires the application of science, technology, and math. Content area experts will present information, mentor, and provide hands-on, practical experiences targeted at solving a multi-faceted, relevant, and dynamic problem. The goal of the STEMposium is to use practicing researchers, scientists, and engineers to model 21st Century Skills such as team dynamics, problem-solving, complex communications, and systems thinking.

JAN 17-21 Model United Nations (MUN) • GRADE 10-12 • andrew.caro@dodea.edu

While Model United Nations is not a DoDEA-organized program, DoDEA-Europe does support high school attendance by funding travel for a small team from each of its high schools to attend MUN in Prague, the UK, or Turkey (whichever is geographically closest). At MUN, students typically roleplay delegates to the United Nations and simulate UN committees. MUN participation is managed by each of the three districts in DoDEA-Europe: East, South, and West. Participants in Model United Nations conferences, known as delegates, are placed in committees, and assigned countries to represent, or occasionally other organizations or political figures, where they represent members of that body. Delegates are assigned countries before the conference, along with receiving a topic, or topics, that their committee will discuss. They conduct research before conferences, formulate position papers and come up with policy proposals that they will then debate with their fellow delegates in the committee, staying true to the actual position of the country or organization they represent. At the end of a conference, the delegates will vote on written policies, called "draft resolutions", with the goal of passing them with a majority vote. Not centrally funded. Transportation only.

JAN 21-26 Jazz Festival GRADE 9-12 • britainy.lewis@dodea.edu

Jazz Festival is a six-day advanced performing arts symposium for motivated and talented high school students. The objectives of the Big Band and Vocal Jazz Ensemble are to provide students with advanced instruction in jazz studies. The week of intense work culminates with performances. The Festival also contains a workshop component. The objective of the workshop is to increase capacity in jazz skills across DoDEA Europe. Students who do not feel ready to audition for the Big Band or Vocal Jazz Ensemble, but are interested in jazz studies, should apply for the workshop. This features world-renown jazz clinicians as well as DoDEA music teachers as staff. LIVE Stream: <https://www.facebook.com/DoDEAEuropeActivitiesAthletics>

JAN 29-FEB 3 Educator's Rising GRADE 9-12 • aaron.mundy@dodea.edu

Educators Rising provides a fun, interactive conference for students who are interested in careers in education. Leading educators from DoDEA and the United States present teaching and learning strategies in sessions of choice. Activities are geared to motivate and inspire aspiring educators. Schools must have a local Educators Rising Chapter to send a delegation to this event.

FEB 22-24 FIRST Tech Robotics Challenge (FCT) GRADE 9-12 • vickie.lewis@dodea.edu

FIRST Tech Challenge is an exciting and fun global robotics program that ignites an enthusiasm for science, technology, and discovery in young people. With a focus on STEM skills and concepts, the event teaches principles of leadership and how to work as a team. Student teams at FTC compete head-to-head in shifting alliances using robots designed, built, and programmed by team members. The robot kit is reusable year-to-year and is programmed using Java. Teams are required to develop strategies and build robots based on sound engineering principles and keep an engineering notebook detailing their work. Awards are given for the competition as well as for community outreach, design, and other real-world accomplishments. LIVE Stream: <https://www.facebook.com/DoDEAEuropeActivitiesAthletics>

FEB 28-MAR 1 Junior Science & Humanities Symposium (JSHS) GRADE 9-12 • marsha.mccauley@dodea.edu

The Junior Science and Humanities Symposia (JSHS) Program is a tri-service (U.S. Army, Navy, and Air Force) sponsored STEM competition which promotes original research and experimentation in the sciences, technology, engineering, and mathematics (STEM) at the high school level and publicly recognizes students for outstanding achievement. By rewarding research excellence, JSHS aims to widen the pool of trained talent prepared to conduct research and development vital to our nation. Students work under supervision of a mentor, typically school-based, to develop and conduct their original research project for submission to the DoDEA-Europe Regional event held in Grol3-Gerau, Germany in March. The best projects from the Region are advanced to JSHS Nationals. Students and families bear no cost for participation in JSHS at any level. LIVE Stream: <https://www.jshseurope.org/>



REGIONAL ACTIVITIES & SMHS CLUBS

HIGH SCHOOL (con't.)

MAR 4-8 Model Senate (MUS) GRADES 9-12 • andrew.caro@dodea.edu

Model Senate is a unique simulation of the American congressional process in the United States Senate. High school students are assigned to play the roles of senators and other senior members of government where they enact legislation based on the platforms of their assigned lawmakers. Students come away from this event with hands on knowledge of current congressional topics and a unique perspective of the legislative process.

MAR 10-15 Honors Music Festival (HMF) GRADES 9-12 • britainy.lewis@dodea.edu

Approximately 70 instrumentalists and 80 vocalists are selected by blind audition for the opportunity to study and perform under the batons of two of America's finest conductors. After several days of intensive rehearsals, where a variety of band and choral literature is rehearsed, students perform an evening concert in the local community. LIVE Stream: <https://www.facebook.com/DoDEAEuropeActivitiesAthletics>

APR 16-19 Future Business Leaders of America (FBLA) GRADES 9-12 • shawn.mccarthy@dodea.edu

Future Business Leaders of America (FBLA) students strive to develop personal and professional skills that will support their college and career aspirations. The Student Leadership Connection features seminars on public speaking, leadership techniques, organizational skills, ethics, education & career guidance, and research and analysis of business events. During the Conference, participants are engaged in competitions ranging from audio-visual presentations to web design. Students manage and present the conference sessions while representing their local chapters as state-level officers. An intensive businessstyle recruitment and interview process hires the new State FBLA Officers, who then begin the yearlong planning and development process for the next Student Leadership Connection.

MIDDLE SCHOOL

DEC 4-8 Junior Leadership Seminar (JLS) GRADES 7-8 • james.martin@dodea.edu

Junior Leadership Seminar is a 5-day event designed to prepare students to be leaders in an interdependent, global community by developing their strengths and skills. Students will actively participate in a variety of leadership skills-based themes: Listening Skills, Leadership Characteristics, Decision Making, Time Management, Goal Setting, Project Management, Advocacy, Fund Raising, Intercultural and Interpersonal Skills, and Team Building. Students will plan a service, spirit, or needs-based project and implement it upon return to their school.

MAR 12-14 MATHCOUNTS GRADES 6-8 • james.martin@dodea.edu

School sponsors coach middle school students in problem-solving and math skills for this national program. Students then compete as both teams and individuals at the School, Chapter, and State levels, with State finalists advancing to Nationals. First, second and third place team and individuals receive trophies.

CLUBS & ORGANIZATIONS

Afterschool Study Hall	GRADE 6-12	Wednesdays @ 1500-1700	• michael.ataceri@dodea.edu
Art Club	GRADE 6-12	Tuesday & Thursday @ 1530-1730 (FEB 23)	• matt.mckown@dodea.edu
Drill & Color Guard	GRADE 8-12	Wednesdays @ 1500-1715	• timothy.curling@dodea.edu
Gay Straight Alliance (GSA)	GRADE 6-12	Wednesdays @ 1045-1135	• meaghan.panzer@dodea.edu
Student Council - HS	GRADE 9-12	Mondays @ 1100-1135	• jennifer.garcia@dodea.edu
Student Council - MS	GRADE 6-8	Wednesdays @ 1045-1135	• christine.arnold@dodea.edu
Marskmanship	GRADE 8-12	Tuesdays @ 1500-1715	• timothy.curling@dodea.edu
MS FIRST Robotics Club - FLL	GRADE 6-8	Mondays @ 1500-1700	• vickie.lewis@dodea.edu
National Honor Society	GRADE 9-12	Every Other Tuesday @ 1045-1135	• christine.arnold@dodea.edu
National Junior Honor Society	GRADE 6-8	Thursdays @ 1045-1135	• christine.arnold@dodea.edu
Student 2 Student (S2S)	GRADE 6-12	Thursdays @ 1045-1135	• vickie.lewis@dodea.edu



ATHLETICS

HIGH SCHOOL

ATHLETIC DIRECTOR	michelle.chandler@dodea.edu	
BASEBALL	carl.jorgensen@dodea.edu	• Championships: MAY 22-24
BOYS' BASKETBALL	james.martin@dodea.edu	• Championships: FEB 14-17
BOYS' SOCCER	andrew.caro@dodea.edu	• Championships: MAY 20-23
BOYS' TENNIS	andrew.caro@dodea.edu	• Championships: OCT 19-20
BOYS' VOLLEYBALL	salvatore.iozzia@dodea.edu	• Championships: OCT 26-28
CHEERLEADING (FALL)	kendra.larocca@dodea.edu	
CHEERLEADING (WINTER)	kendra.larocca@dodea.edu	• Championships: FEB 14-17
CROSS COUNTRY	aaron.mundy@dodea.edu	• Championships: OCT 21
FOOTBALL	shannon.burcham@dodea.edu	• Championships: OCT 28
GIRLS' BASKETBALL	michelle.chandler@dodea.edu	• Championships: FEB 14-17
GIRLS' SOCCER	jennifer.garcia@dodea.edu	• Championships: MAY 20-23
GIRLS' TENNIS	andrew.caro@dodea.edu	• Championships: OCT 19-20
GIRLS' VOLLEYBALL	shawn.mccarthy@dodea.edu	• Championships: OCT 26-28
SOFTBALL	kendra.larocca@dodea.edu	• Championships: MAY 22-24
SWIMMING (SWORDFISH)	sigswordfish.secretary@gmail.com	• Various
TRACK & FIELD	shannon.burcham@dodea.edu	• Championships: MAY 23-24
WRESTLING	luis.caballero@dodea.edu	• Sectionals: FEB 3
		• Championships: FEB 8-10

MIDDLE SCHOOL

CROSS COUNTRY (Grade 8)	aaron.mundy@dodea.edu	• Home competitions only
SWIMMING (SWORDFISH)	sigswordfish.secretary@gmail.com	• Various
TRACK & FIELD (Grade 8)	shannon.burcham@dodea.edu	• Home competitions only
WRESTLING (Grade 8)	luis.caballero@dodea.edu	• Home competitions only

Championships LIVE Stream: <https://www.facebook.com/DoDEAEuropeActivitiesAthletics>

Home Competition LIVE Stream: <https://www.youtube.com/@sig-tvsigonellamshs/streams>

The following forms **MUST** be on file to participate in extracurricular athletics at Sigonella MHS.
<https://sites.google.com/student.dodea.edu/sigathletics/home>

- 1) Sports Physical Form
- 2) Risk of Injury Form
- 3) Supplemental Medical Form
- 4) Drugs and Alcohol Form
- 5) Parent Commitment Form
- 6) 19-year-old Athlete Form (if applicable)





MONTHLY CALENDAR

DoDEA Europe Future Calendars: <https://www.dodea.edu/regional-calendars>



SIGONELLA MIDDLE HIGH SCHOOL SCHOOL YEAR 2023 - 2024



AUGUST							IMPORTANT DATES							JANUARY												
S	M	T	W	T	F	S	August 14	All Teachers Report to Duty	S	M	T	W	T	F	S	August 14-18	Teacher Work Week	7	8	9	10	11	12	13		
6	7	8	9	10	11	12	★ August 18	New Student Orientation 0800-1200 parents attend 0800-0930	14	15	16	17	18	19	20	20	21	22	23	24	25	26	27			
13	14	15	16	17	18	19	August 21	School Begins-ALL Classes	21	22	23	24	25	26	27	28	29	30	31							
20	21	22	23	24	25	26	September 4	Labor Day- Federal Holiday-No School	September 15	Teacher Training -1100 Early Dismissal	10A's 10B's															
27	28	29	30	31			September 7	Open House 1700-1900	September 19	Teacher Training -1100 Early Dismissal	FEBRUARY															
4 A's 4B's							September 15	Teacher Training -1100 Early Dismissal	S	M	T	W	T	F	S	FEBRUARY										
SEPTEMBER							September 19	Teacher Training -1100 Early Dismissal	October 6	Teacher Training - No School for Students	4	5	6	7	8	9	10									
S	M	T	W	T	F	S	October 6	Teacher Training - No School for Students	October 9	Columbus Day - Federal Holiday-No School	11	12	13	14	15	16	17									
					1	2	October 19	End of First Quarter	October 20	Teacher Work Day - No School for Students	18	19	20	21	22	23	24									
3	4	5	6	7	8	9	October 27	Parent/Teacher Conf.-No School for Students	October 27	Parent/Teacher Conf.-No School for Students	25	26	27	28	29											
10	11	12	13	14	15	16	November 7	Teacher Training - 1100 Early Dismissal	November 7	Teacher Training - 1100 Early Dismissal	9A's 10B's															
17	18	19	20	21	22	23	November 8	Teacher Training - 1100 Early Dismissal	November 8	Teacher Training - 1100 Early Dismissal	MARCH															
24	25	26	27	28	29	30	November 10	Veteran's Day - Federal Holiday-No School	November 10	Veteran's Day - Federal Holiday-No School	S	M	T	W	T	F	S									
10A's 10B's							November 23-24	Fall Break - No School	November 23-24	Fall Break - No School	3	4	5	6	7	8	9									
OCTOBER							December 8	Teacher Training-No School for Students	December 8	Teacher Training-No School for Students	10	11	12	13	14	15	16									
S	M	T	W	T	F	S	December 18-29	Winter Break - No School	December 18-29	Winter Break - No School	17	18	19	20	21	22	23									
1	2	3	4	5	6	7	January 1	New Year's - Federal Holiday-No School	January 1	New Year's - Federal Holiday-No School	24	25	26	27	28	29	30									
8	9	10	11	12	13	14	January 2	Instruction Resumes	January 2	Instruction Resumes	9A's 9B's															
15	16	17	18	19	20	21	January 8-11	First Semester Finals	January 8-11	First Semester Finals	31															
22	23	24	25	26	27	28	January 11	End of Second Quarter/Semester 1	January 11	End of Second Quarter/Semester 1	8A's 7B's															
29	30	31					January 12	Teacher Workday - No School for Students	January 12	Teacher Workday - No School for Students	APRIL															
9A's 9B's							January 15	MLK Jr. Day - Federal Holiday-No School	January 15	MLK Jr. Day - Federal Holiday-No School	S	M	T	W	T	F	S									
NOVEMBER							January 16	Second Semester Begins	January 16	Second Semester Begins	7	8	9	10	11	12	13									
S	M	T	W	T	F	S	January 22	Teacher Training - 1100 Early Dismissal	January 22	Teacher Training - 1100 Early Dismissal	14	15	16	17	18	19	20									
			1	2	3	4	February 19	President's Day - Federal Holiday-No School	February 19	President's Day - Federal Holiday-No School	21	22	23	24	25	26	27									
5	6	7	8	9	10	11	February 20	Teacher Training - No School for Students	February 20	Teacher Training - No School for Students	28	29	30													
12	13	14	15	16	17	18	March 11	Teacher Training - 1100 Early Dismissal	March 11	Teacher Training - 1100 Early Dismissal	10A's 11B's															
19	20	21	22	23	24	25	March 21	End of Third Quarter	March 21	End of Third Quarter	MAY															
26	27	28	29	30			March 22	Teacher Work Day-No School for Students	March 22	Teacher Work Day-No School for Students	S	M	T	W	T	F	S									
10A's 9B's							March 25-29	Spring Break-No School	March 25-29	Spring Break-No School	5	6	7	8	9	10	11									
DECEMBER							April 1	Teacher Training - No School for Students	April 1	Teacher Training - No School for Students	12	13	14	15	16	17	18									
S	M	T	W	T	F	S	May 15	Teacher Training - 1100 Early Dismissal	May 15	Teacher Training - 1100 Early Dismissal	19	20	21	22	23	24	25									
					1	2	May 27	Memorial Day-Federal Holiday-No School	May 27	Memorial Day-Federal Holiday-No School	26	27	28	29	30	31										
3	4	5	6	7	8	9	May 30-June 4	Second Semester Finals	May 30-June 4	Second Semester Finals	11A's 11B's															
10	11	12	13	14	15	16	June 5	Last Day of School - 1100 Dismissal	June 5	Last Day of School - 1100 Dismissal	JUNE															
17	18	19	20	21	22	23	June 6	Teacher Work Day - No School for Students	June 6	Teacher Work Day - No School for Students	S	M	T	W	T	F	S									
24	25	26	27	28	29	30	Important ****1330 Dismissal Every Thursday	Important ****1330 Dismissal Every Thursday	Important ****1330 Dismissal Every Thursday	2	3	4	5	6	7	8										
31							PSAT/NMSQT	Testing Window Oct 1-Oct 31 TBD	PSAT/NMSQT	Testing Window Oct 1-Oct 31 TBD	9	10	11	12	13	14	15									
5A's 5B's							SAT	7 Oct/ 2 Dec/ 9 Mar/ 4 May	SAT	7 Oct/ 2 Dec/ 9 Mar/ 4 May	16	17	18	19	20	21	22									
KEY							ACT	9-Dec	ACT	9-Dec	23	24	25	26	27	28	29									
88	A Days					87	B Days					AP Testing	6-10 May & 13-17 May	AP Testing	6-10 May & 13-17 May	30										
□	Exam Days					□	Exam Days					ASVAB	TBD	ASVAB	TBD	Accelerated Withdrawal										
⊗	Student Non-Attendance					⊗	Student Non-Attendance					Semester 1	29-Nov	Semester 1	29-Nov	Semester 2	8-May	Semester 2	8-May	2A's 1B						
○	School Holiday					○	School Holiday					Accelerated Withdrawal														
△	Thursday Dismissal 1330					△	Thursday Dismissal 1330					Accelerated Withdrawal														
▴	Half Day Dismissal 1100					▴	Half Day Dismissal 1100					Accelerated Withdrawal														